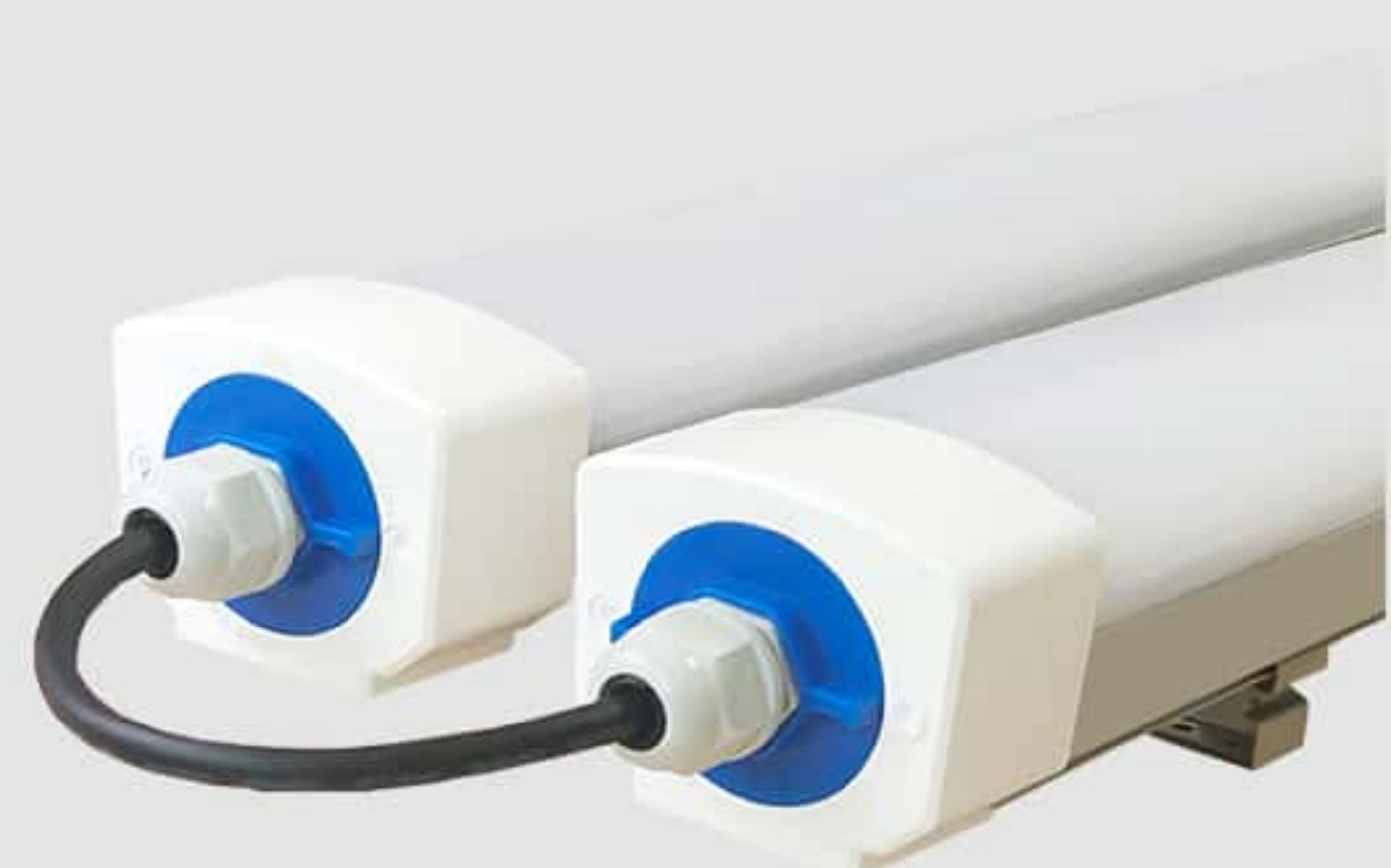
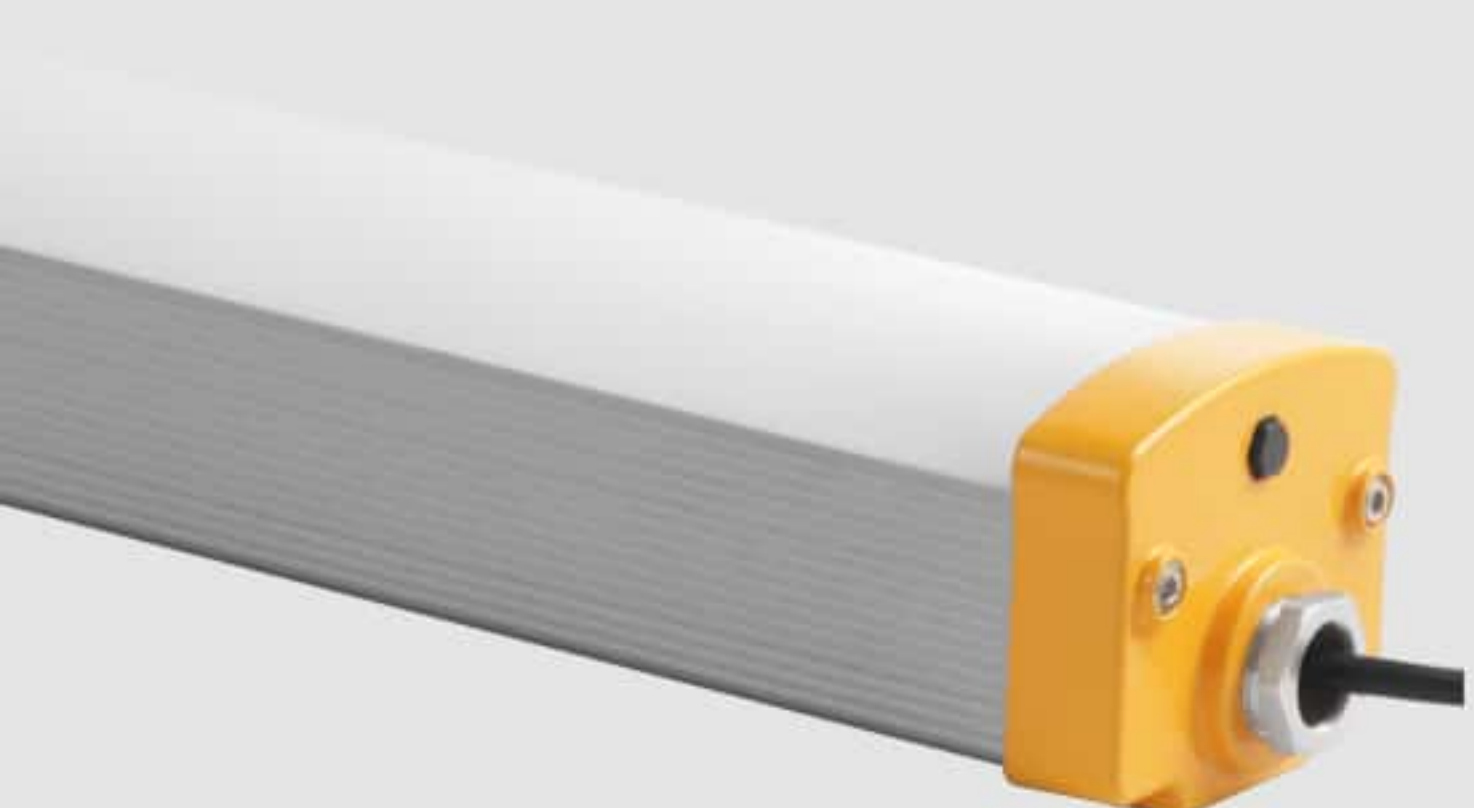




2024 INDOOR LIGHTING

SPRING EDITION

CATALOG



Company Profile

Fireflir Lighting Limited was started 14 years ago, by Jorge Wong who has been in the lighting field for past two decades. Jorge, who has been manufacturing and researching lighting products from the early 1990's aims to provide the right product to our clients under the company Fireflir Lighting.

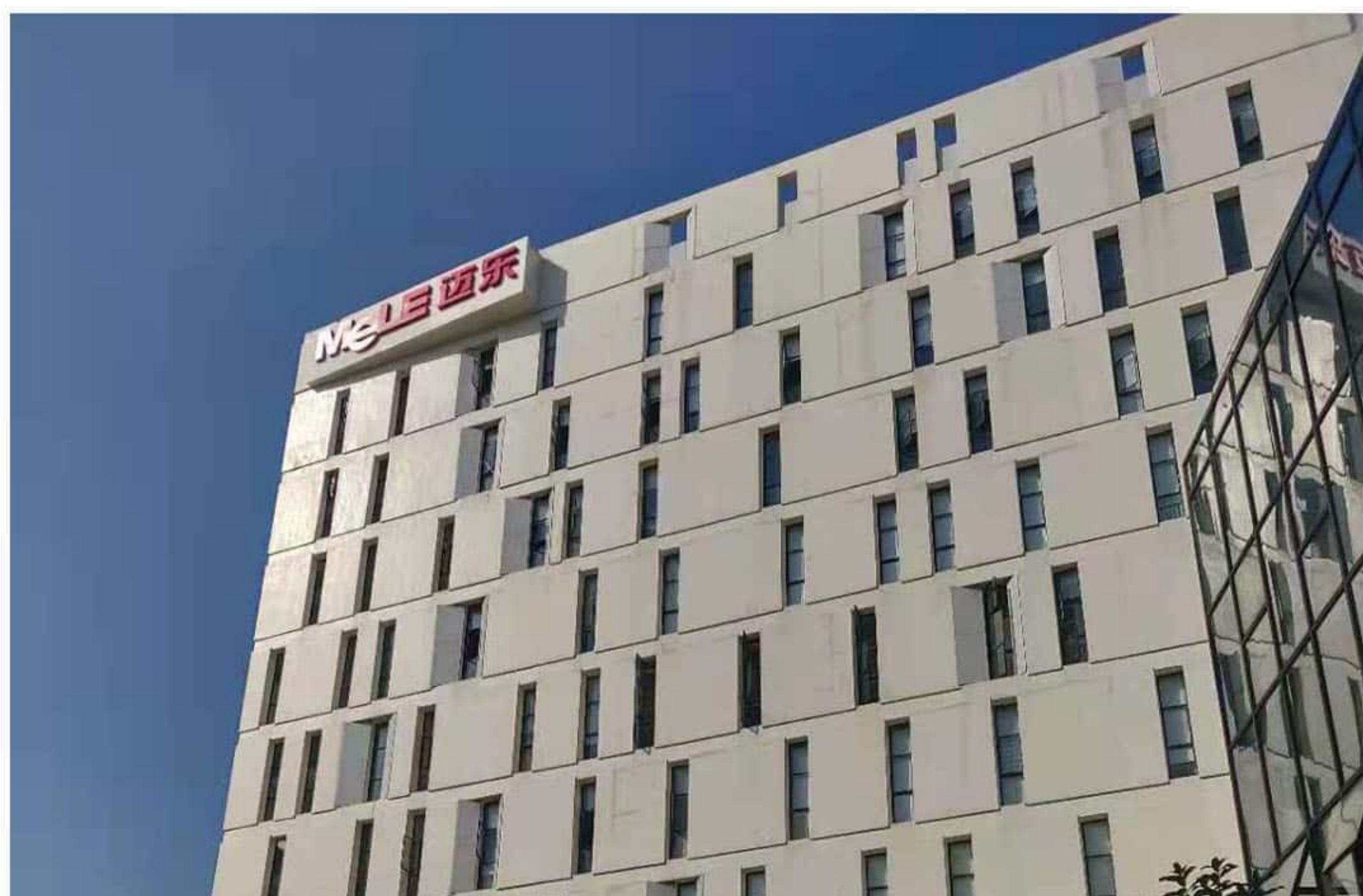
Located in the LED producing&researching center, Fireflir is not only a manufacturer, but also a designer. Most of products are designed by Fireflir's engineers. The LED Tri-proof Lightings and LED High Bay Lightings are widely used in the market.

High efficiency production lines, leading technology of LED, excellent and experienced LED engineers and employees, and also 100% satisfied customer service ensures our LED product with high quality and latest design. The production strictly carry out ISO9001 International Quality Certification System and ISO14001 International Environment Certification System.

Based on above, Fireflir aim to produce the right product with best price required by our client in this competitive lighting market. Europe, Middle East, Southeast Asia, Australia and also Latin America are our main market.

All in all, Fireflir hope to work with all our friends from the whole world in the LED lighting field and make a contribution to the green earth.

Welcome to Fireflir Lighting



Factory Building



Reception Area

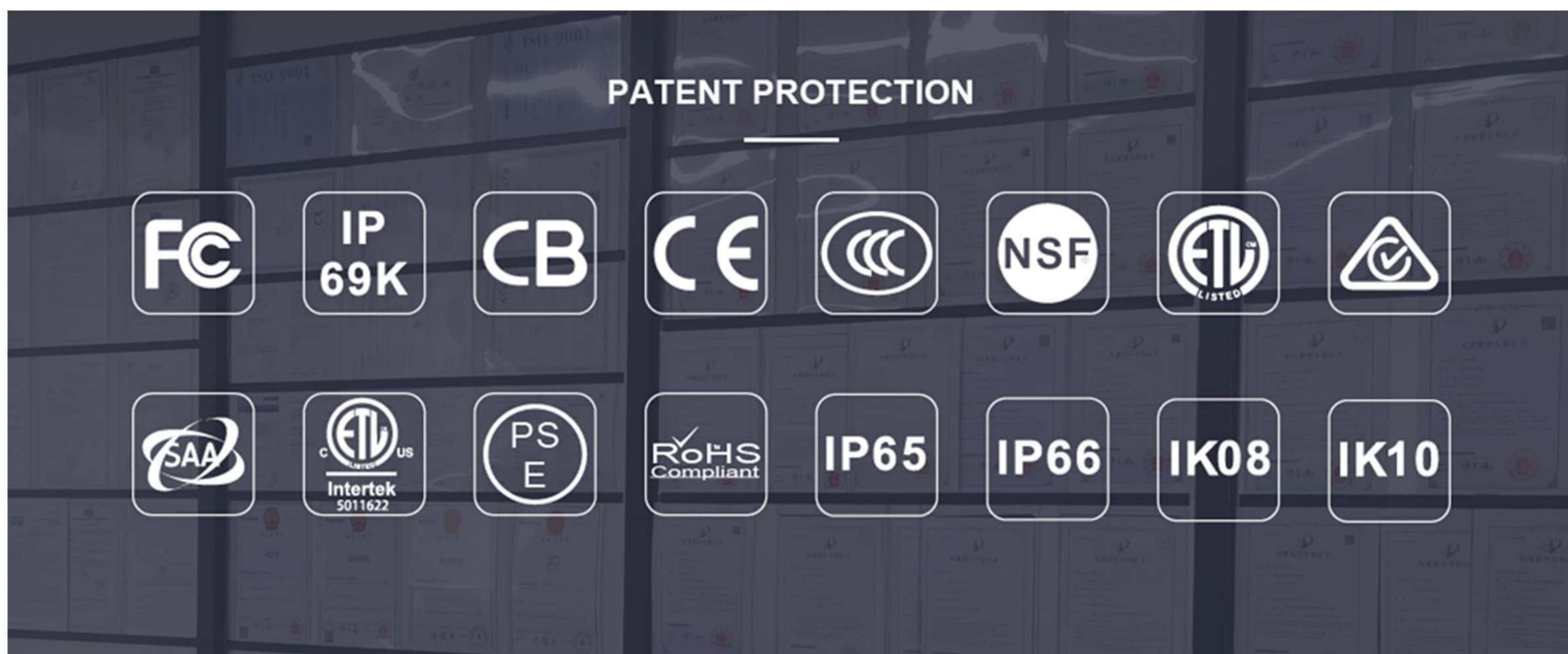


Production Area



Production Area

Certificates



Welcome to Fireflie Lighting



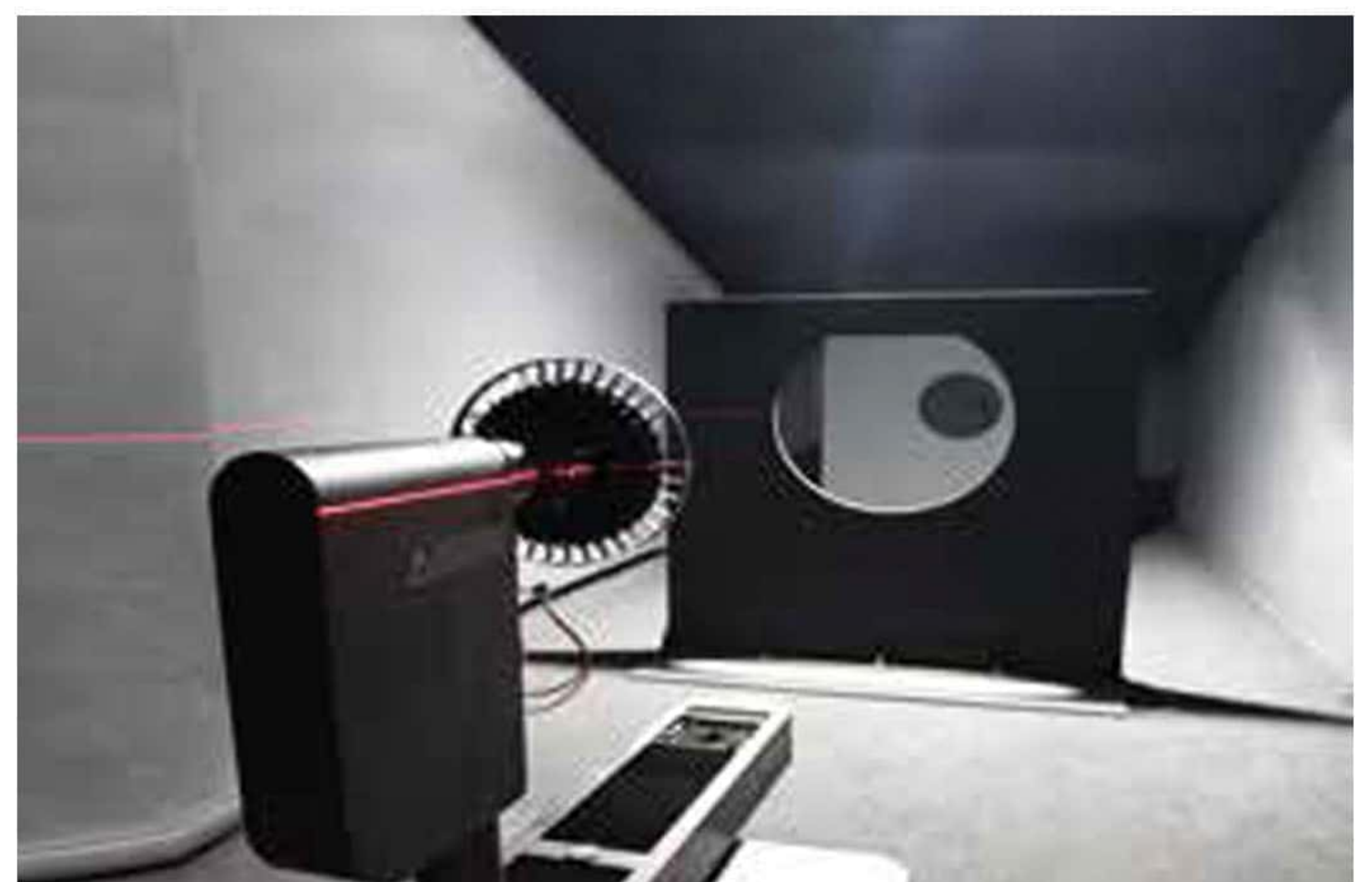
Waterproof test



Temperature&humidity test



Goniophotometers system



Goniophotometers system



Integrating sphere system



Salt spray test



Vibration test



Laser Engraving machine

Contents

P1 >>>>> Aurora Tri-proof Light <<<<<



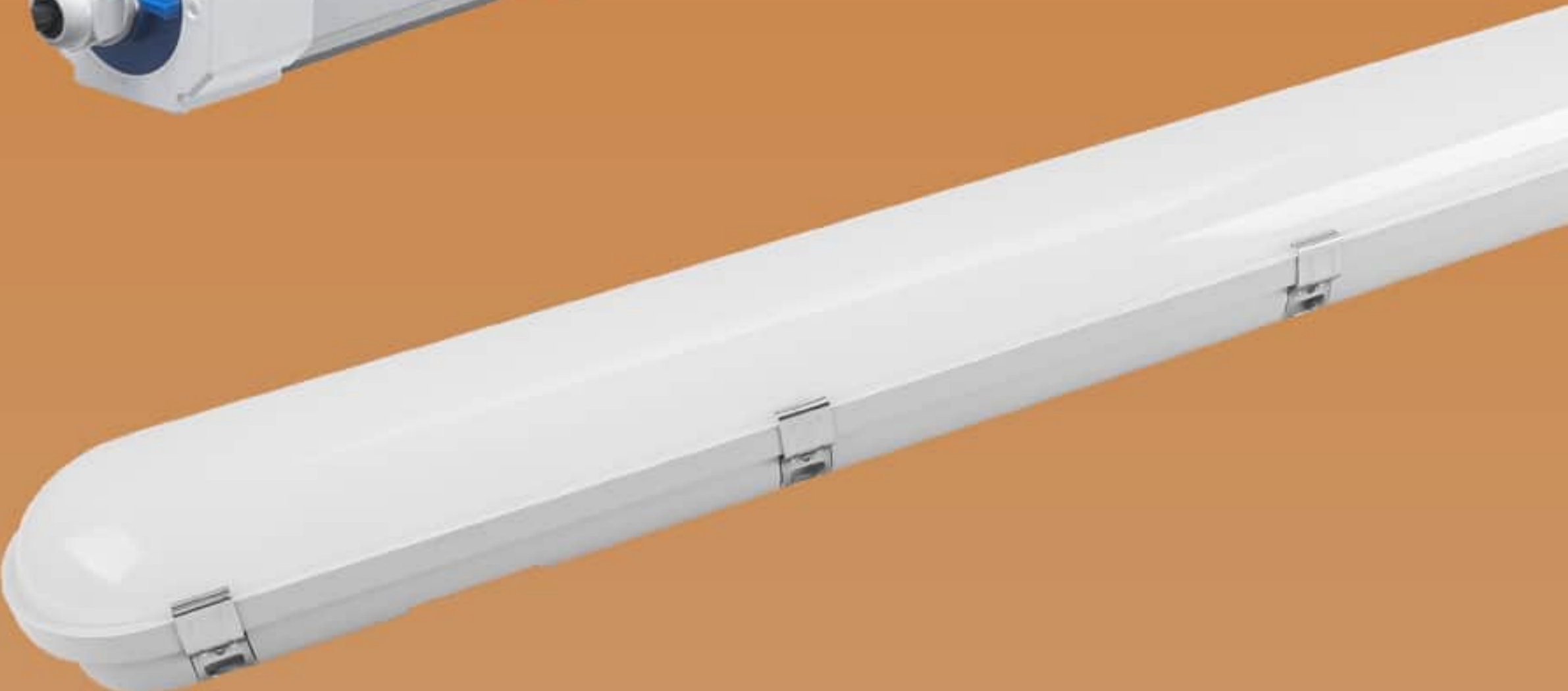
P2 >>>>> Arena Tri-proof Light <<<<<



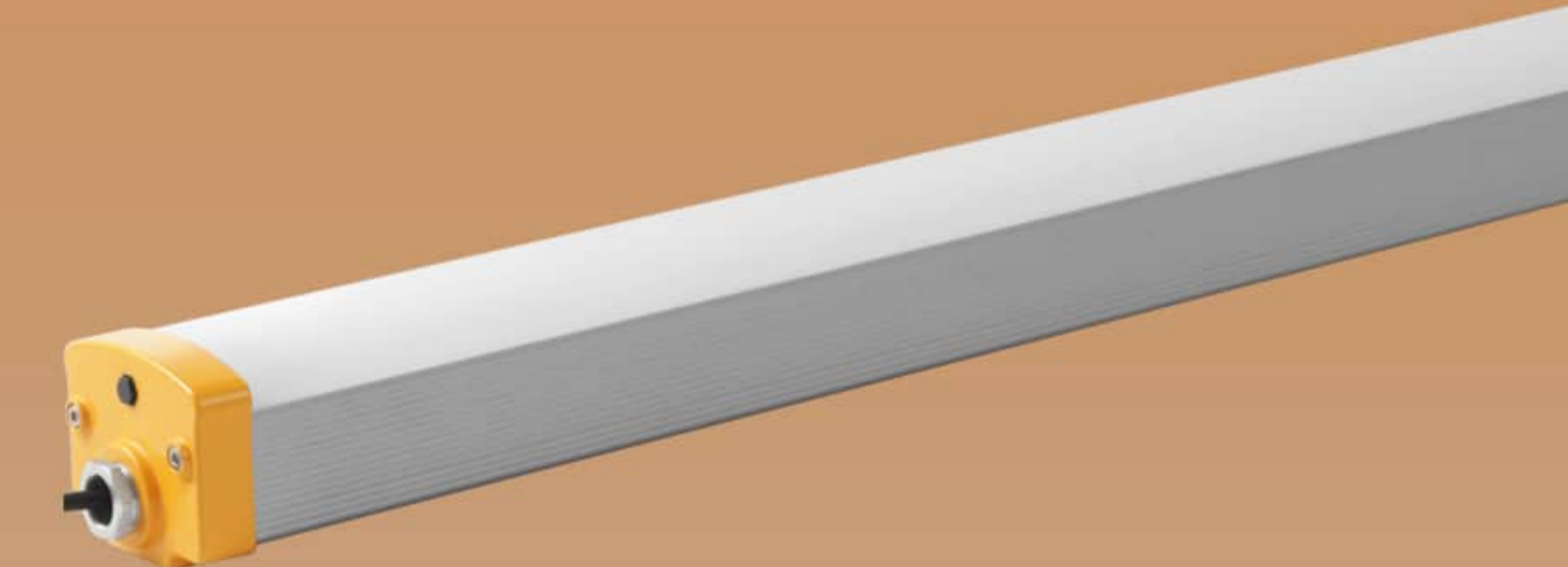
P3 >>>>> Aviator Tri-proof Light <<<<<



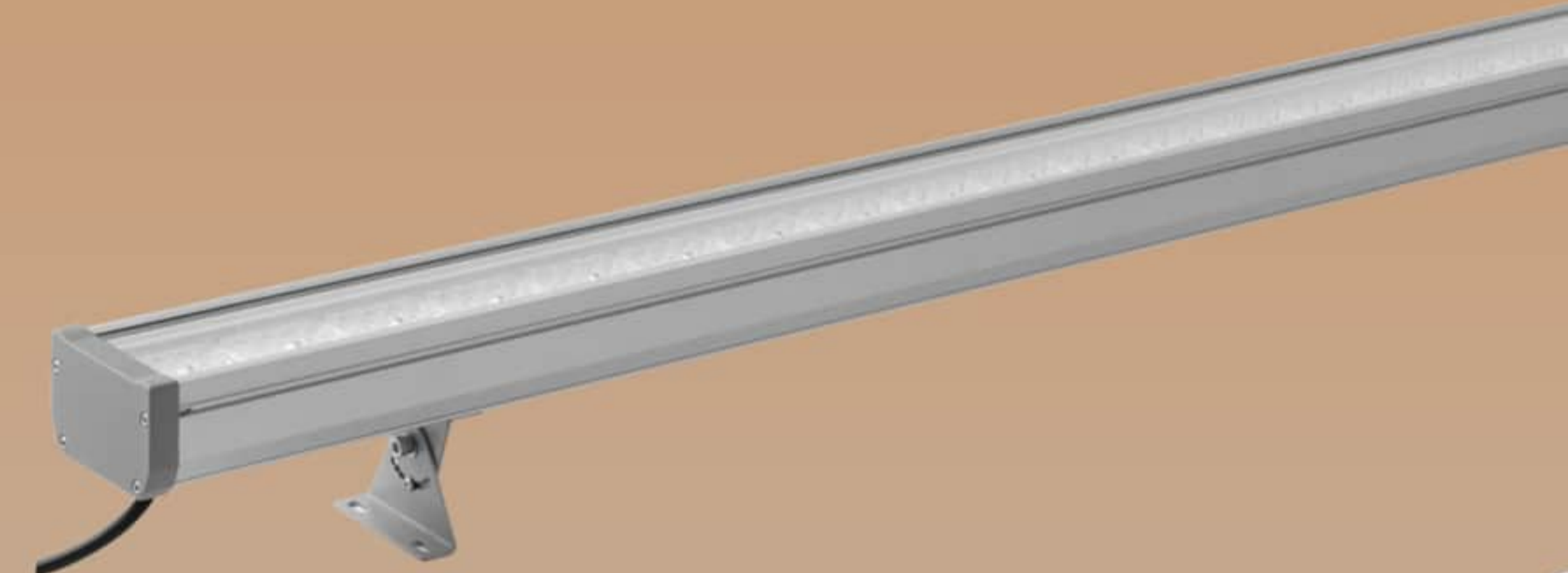
P4 >>>>> PC Vapor Tight Fixture <<<<<



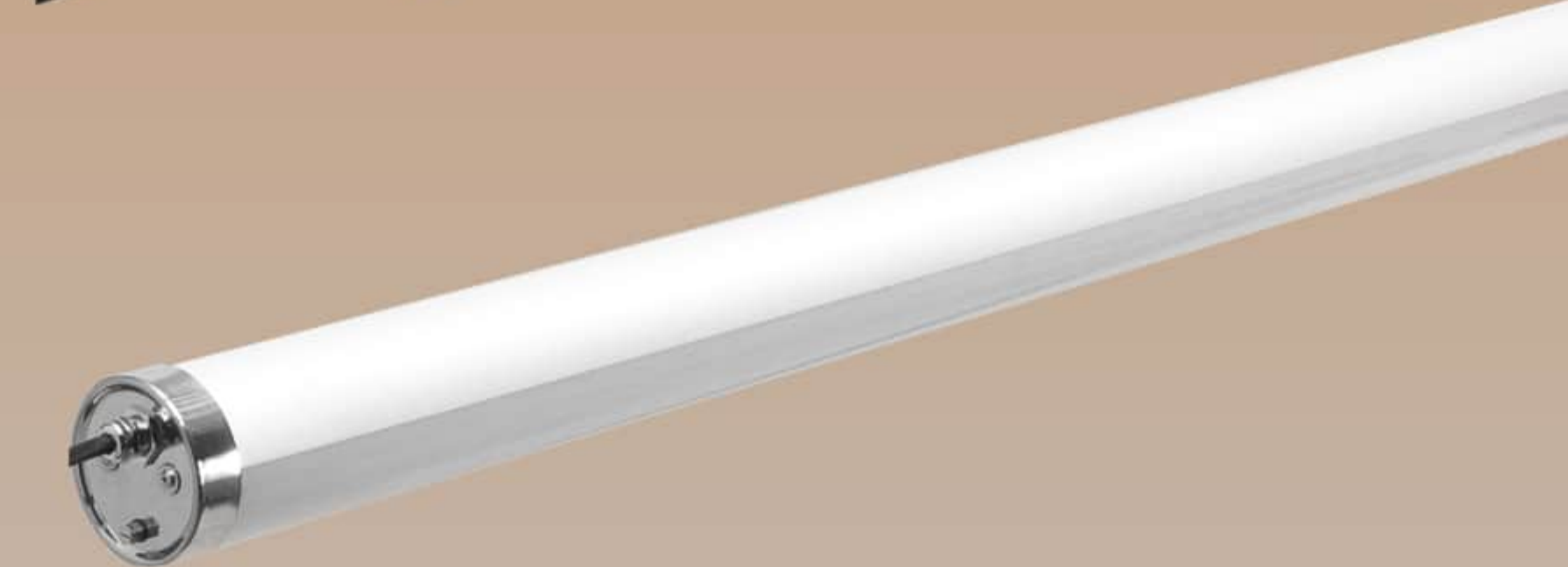
P5 >>>>> Arcelia Tri-proof Light <<<<<



P6 >>>>> GlassGuard Batten Light <<<<<



P7 >>>>> IP69K Tri-proof Light <<<<<

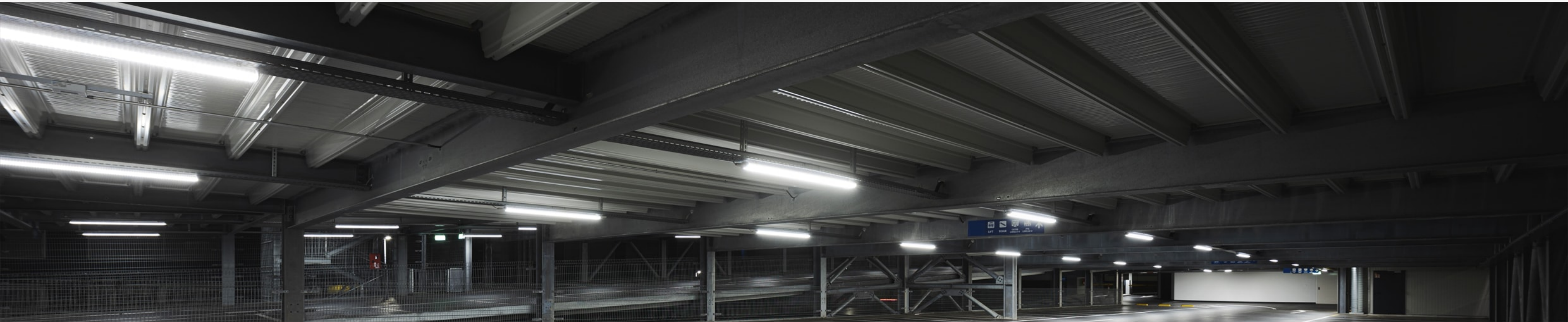


P8 >>>>> Maxima Low Bay Light <<<<<



P9 >>>>> Angel Low Bay Light <<<<<





Power&CCT selectable
Tri-proof Light



Model	FF-P2W20	FF-P4W40	FF-P5W60
Wattage	15-20-23-25W	25-30-40-45W	40-50-55-65W
Lumen	1800-3500lm	3000-6300lm	4800-8400lm
Size(mm)	600*65*70	1200*65*70	1500*65*70
Lumen Efficacy	130LM/W 150LM/W ±5%		
Light Source	2835 SMD		
Color temperature	2700-6500K(3 CCT selectable)		
Power Factor	>0.9		
Input Voltage	AC200-240V/100-277V		
IP Grade	IP65		
Installation	Mounted/Suspended		
Dimmable	0-10V optional		
Color rendering	>80		
Finish	PC Body+Aluminum PCB+LED		
Lifespan	50,000 Hours		
Certification	CE(EMC LVD) ROHS		
Warranty	5 YEARS		

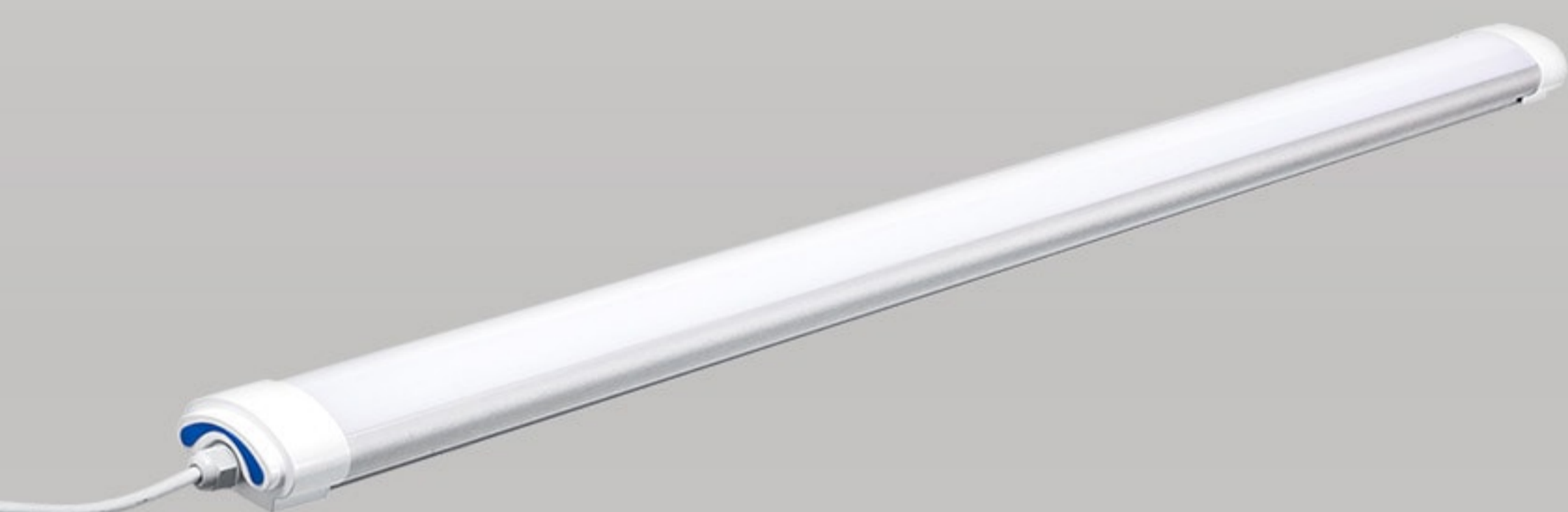
- Power&CCT field selectable
- IP65 Waterproof
- Milky&clear cover
- 0-10V dimming
- Emergency available
- Suspended&Mounted installation
- Microwave sensor optional

Discover the Aurora Tri-proof Light: power & CCT selectable, up to 150lm/w efficiency, tool-free wiring, and linkable. Features emergency, sensor options, dimmable, 5-year warranty, and IP65 rated. Ideal for efficient, adaptable lighting.



Arena

Vapor Tight Light



Model	FF-M2W20	FF-M3W30	FF-M4W40	FF-M5W50
Wattage	20W	30W	40W	50W
Lumen	2200-2800lm	3300-4200lm	4400-5600lm	5500-7000lm
Size(mm)	600*80*45	900*80*45	1200*80*45	1500*80*45
Weight	0.6KGS	0.9KGS	1.2KGS	2KGS
Light Source	2835 SMD			
Color temperature	2700-6500K			
Power Factor	0.95			
Input Voltage	AC200-240V/100-277V			
IP Grade	IP65			
Installation	Mounted/Suspended			
Dimmable	0-10V optional			
Color rendering	>80			
Finish	Aluminum+PC			
Lifespan	50,000 Hours			
Certification	CE(EMC LVD) ROHS			
Warranty	5 YEARS			

- Light&elegant design
- IP65 Waterproof
- Milky&clear cover
- 0-10V dimming
- Emergency mode available
- Suspended&Mounted installation
- Microwave sensor optional

Arena LED Vapor Tight Light is brilliantly designed as a one-for-one replacement to fluorescent tube fixtures. With IP65 design, it is widely used in garages, car washing rooms, shops and more.



Aviator

Tri-proof Light



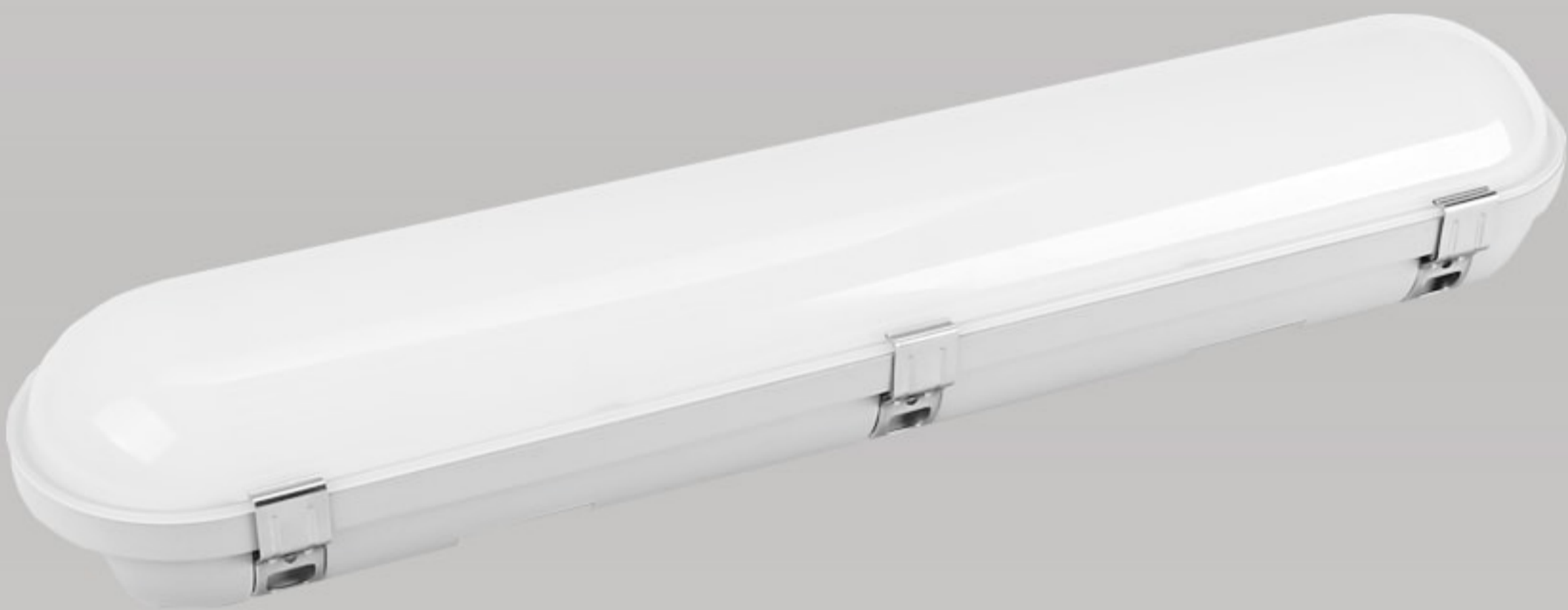
Model	FF-L65X2-20	FF-L65X4-40	FF-L65X4-50	FF-L65X5-60	FF-L65X5-80
Wattage	20W	40W	50W	60W	80W
Lumen	2600-3400	5200-6800	6500-8500	7800-10200	10400-13600
Size(mm)	600*76*67	1200*76*67		1500*76*67	
Lumen Efficacy	130LM/W 150LM/W 170LM/W				
Light Source	2835 SMD				
Color temperature	2700-6500K				
Power Factor	>0.9				
Input Voltage	AC200-240V/AC100-277V				
IP Grade	IP65				
Installation	Mounted/Suspended				
Dimmable	1-10V/Dali optional				
Color rendering	>80				
Finish	Aluminum+PC				
Lifespan	50,000 Hours				
Certification	CE(EMC LVD) ROHS				
Warranty	5 YEARS				

- Series connection
- IP65 Waterproof
- Milky&clear cover
- 1-10V/Dali dimming
- Emergency mode available
- Haning&Mounted installation
- Microwave sensor optional

Aviator LED Vapor Tight Light is brilliantly designed as a one-for-one replacement to fluorescent tube fixtures. With IP65 design, it is widely used in garages, car washing rooms, factory and more.



PC Vapor Tight Light



Model	FF-PC2F20W	FF-PC4F40W	FF-PC5F60W
Wattage	20W	40W	60W
Lumen	2600lm	5200lm	7800lm
Size(mm)	600*90*79	1200*90*79	1500*90*79
Weight	1.5KGS	2.5KGS	3.2KGS
Light Source	2835 SMD		
Color temperature	2700-6500K		
Power Factor	>0.9		
Input Voltage	AC200-240V/AC100-277V		
IP Grade	IP65		
Installation	Mounted/Suspended		
Dimmable	0-10V/Dali optional		
Color rendering	>80		
Finish	PC Housing+PC Cover		
Lifespan	50,000 Hours		
Certification	CE ROHS		
Warranty	5 YEARS		

- New structure design
- IP65 Waterproof
- Milky&clear cover
- 1-10V/Dali dimming
- Emergency mode available
- Haning&Mounted installation
- Microwave sensor optional

The PC LED Vapor Tight Light combines durability with efficiency, featuring a sturdy PC housing and sizes from 2ft to 5ft (20-70W). Optional emergency and microwave sensors add functionality, while its up to 140lm/w efficiency ensures bright, energy-saving light. Backed by a 5-year warranty, it's a reliable, high-performan- ce lighting solution.



Tubular
Tri-proof Light



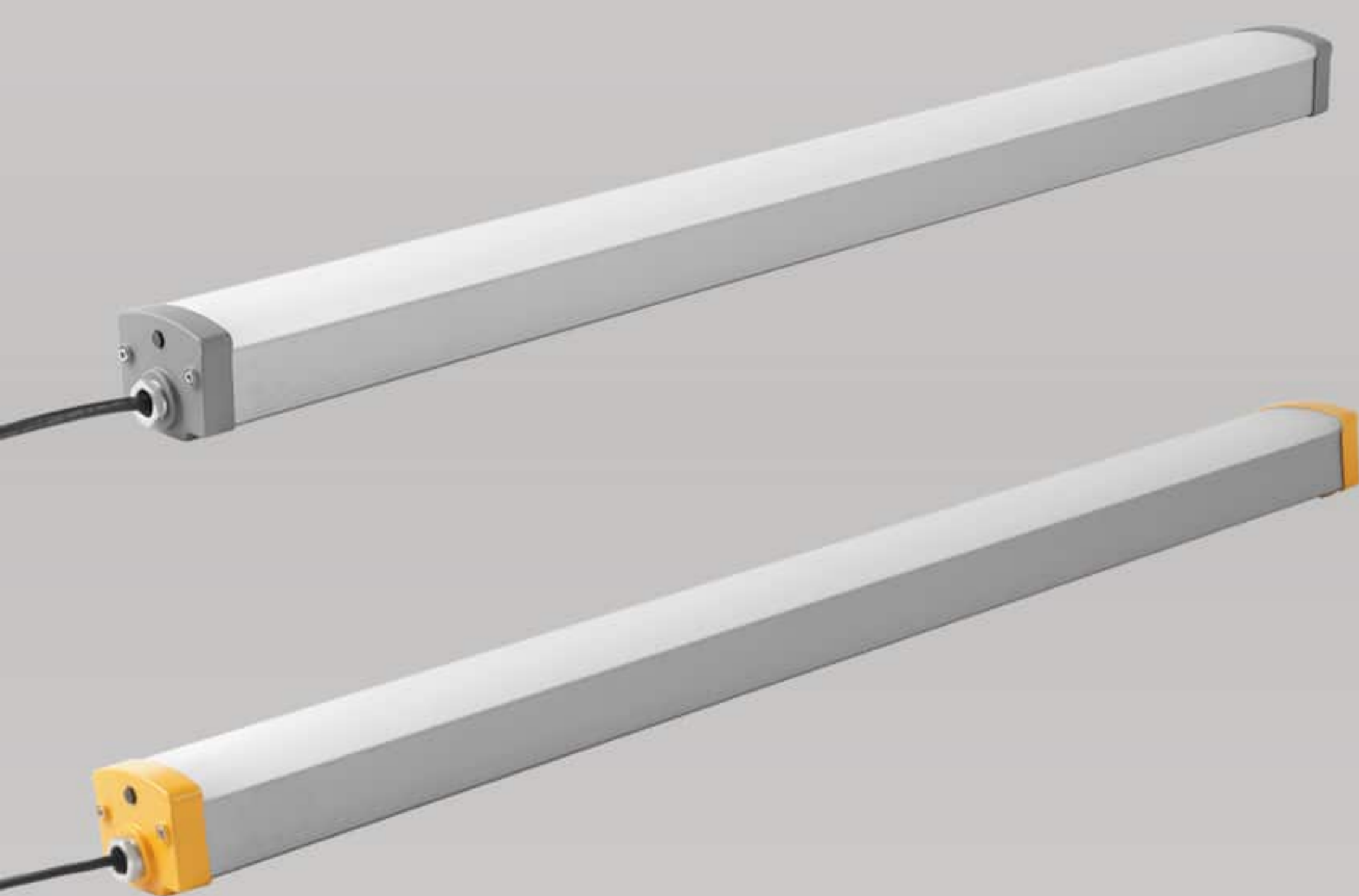
Model	FF-TP2F20	FF-TP4F40	FF-TP5F60
Wattage	20W	40W	60W
Lumen	2400/2800lm	4800/5600lm	7200/8400lm
Size(mm)	600*φ80	1200*φ80	1500*φ80
Lumen Efficacy	120LM/W 140LM/W ±5%		
Light Source	2835 SMD		
Color temperature	2700-6500K		
Power Factor	>0.9		
Input Voltage	AC200-240V/100-277V		
IP Grade	IP67		
Installation	Mounted/Suspended		
Dimmable	0-10V optional		
Color rendering	>80		
Finish	PC Body+Aluminum PCB+LED		
Lifespan	50,000 Hours		
Certification	CE(EMC LVD) ROHS		
Warranty	5 YEARS		

- Tubular Design
- IP67 IP69K Waterproof
- Milky&clear cover
- 0-10V dimming
- Emergency available
- Suspended&Mounted installation
- Microwave sensor optional

The Tubular LED Tri-proof Light, offering 20-60W and 2ft-5ft sizes, features durable PC housing and high IP67&IP69K ratings. Optional sensors enhance functionality, while its efficiency of up to 140lm/-w ensures bright, energy-saving lighting. Comes with a 5-year warranty for reliable, versatile use.



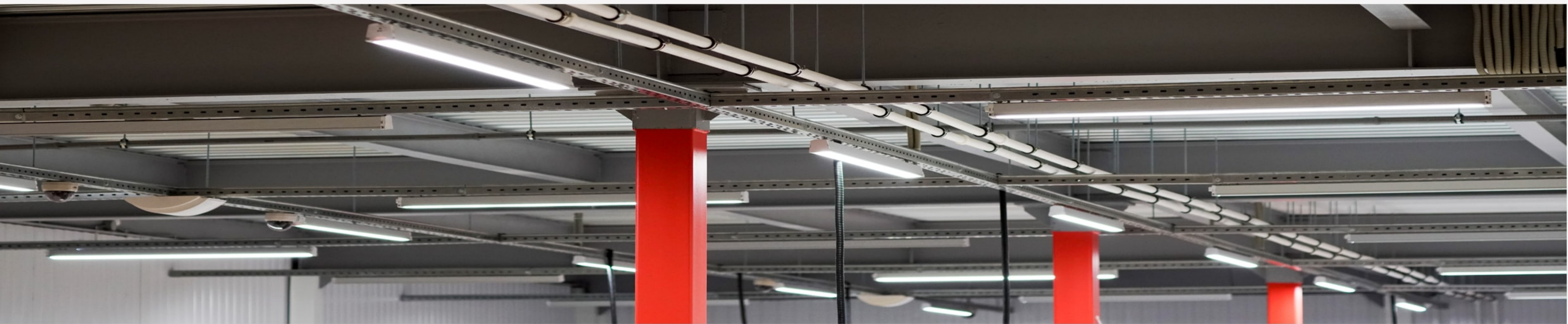
Arcelia
Tri-proof Light



Model	FF-A65X2-30P	FF-A65X3-40P	FF-A65X4-60P	FF-A65X5-80P
Wattage	30W	40W	60W	80W
Lumen	3300/3900lm	4400/5200lm	6600/7800lm	8800/10400lm
Size(mm)	585*91*75	885*91*75	1185*91*75	1485*91*75
Lumen Efficacy	110LM/W 130LM/W ±5%			
Light Source	2835 SMD			
Color temperature	2700-6500K			
Power Factor	>0.9			
Input Voltage	AC200-240V/100-277V			
IP Grade	IP66			
Installation	Mounted/Suspended			
Dimmable	0-10V optional			
Color rendering	>80			
Finish	Aluminum Body+Aluminum PCB+LED			
Lifespan	50,000 Hours			
Certification	CE(EMC LVD) ROHS			
Warranty	5 YEARS			

- Aluminum housing&end cap
- IP66 Waterproof
- Milky&clear cover
- 0-10V dimming
- Emergency available
- Suspended&Mounted installation
- Microwave sensor optional

The Arcelia LED Tri-proof Light offers durability and high efficiency in a sleek design. With sizes ranging from 2ft to 5ft and power from 20-80W, it features robust aluminum construction and options for emergency or microwave sensors. Achieving up to 130lm/w, it ensures energy-saving, bright lighting. Supported by a 5-year warranty, it's a reliable choice for versatile lighting needs.



GlassGuard

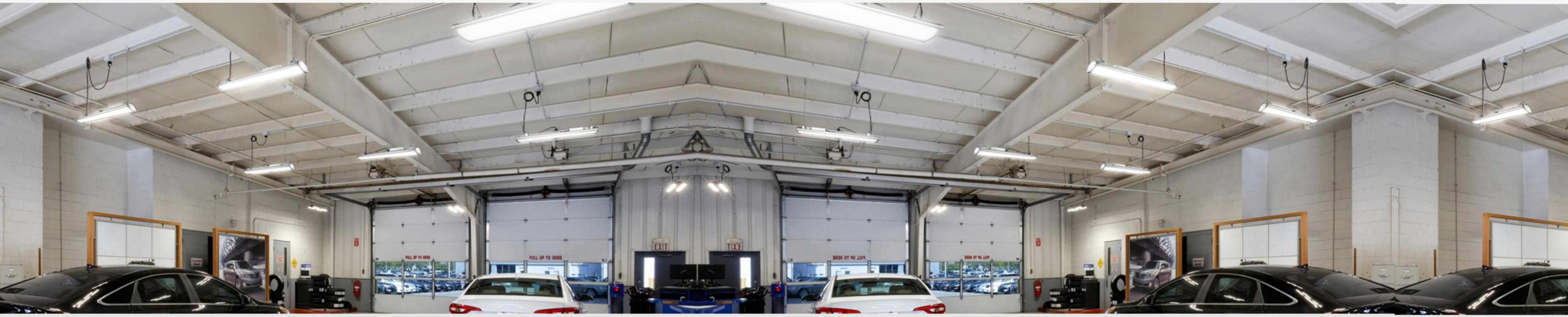
Tri-proof Light



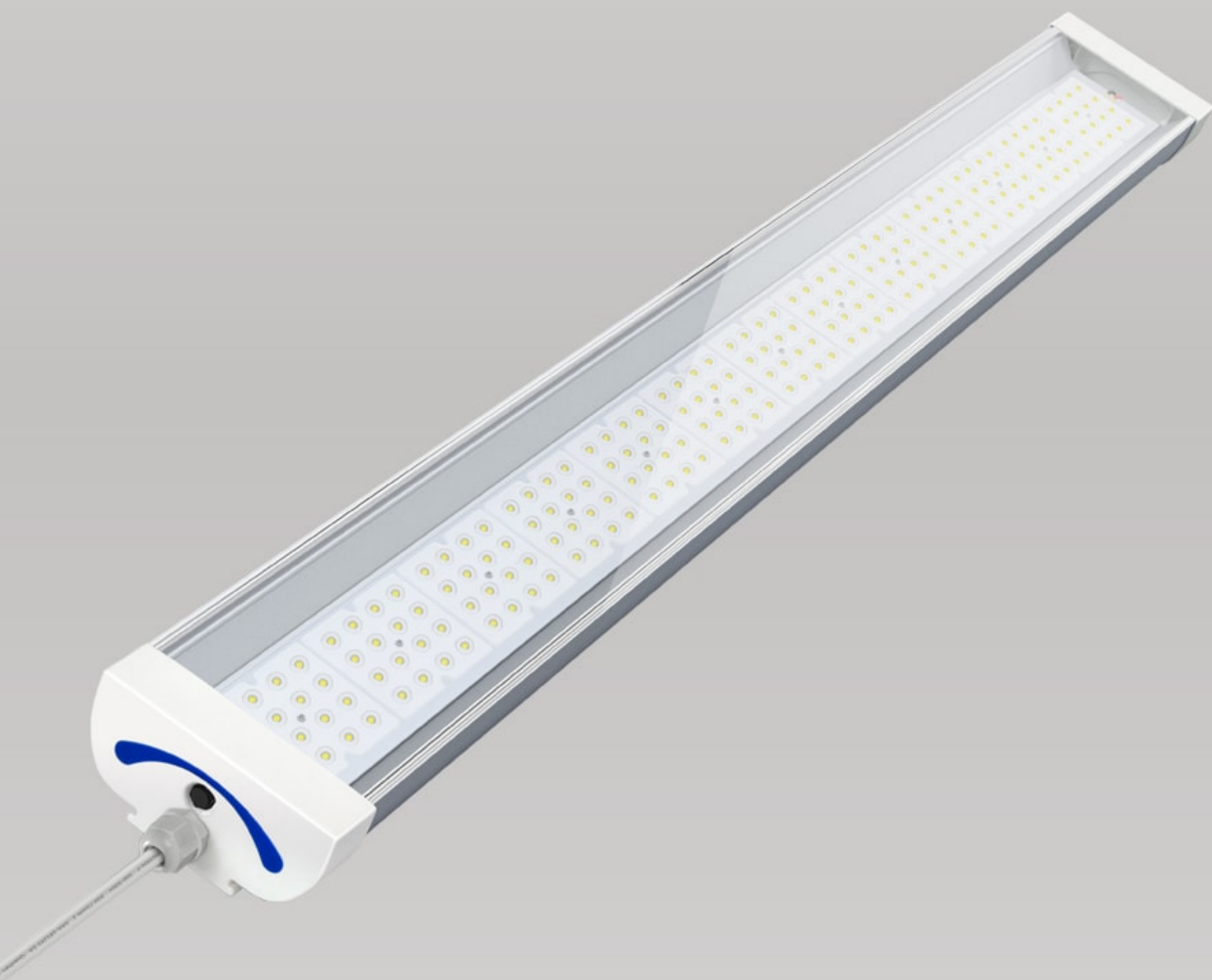
Model	FF-GP1F20	FF-GP2F30	FF-GP4F40	FF-GP5F80
Wattage	20W	30W	40W	80W
Lumen	2000/2400lm	3000/3600lm	4000/4800lm	8000/9600lm
Size(mm)	300*85*58	600*85*58	1200*85*58	1500*85*58
Lumen Efficacy	100/120LM/W			
Light Source	2835 SMD			
Color temperature	2700-6500K			
Power Factor	0.95			
Input Voltage	AC200-240V/100-277V			
IP Grade	IP65			
Installation	Mounted/Suspended			
Dimmable	0-10V optional			
Color rendering	>80			
Finish	Aluminum+PC			
Lifespan	50,000 Hours			
Certification	CE(EMC LVD) ROHS			
Warranty	5 YEARS			

- Tempered Glass cover
- IP66 Waterproof
- Milky&clear cover
- 0-10V dimming
- Emergency mode available
- Suspended&Mounted installation
- Microwave sensor optional

The GlassGuard LED Tri-Proof Light, featuring a durable 6063 aluminum frame and tempered glass diffuser (clear or frosted), delivers versatile lighting options from 20W to 80W. With IP66 and IK10 ratings, it's built to withstand water, dust, and impacts. Comes with a 5-year warranty for enduring performance.



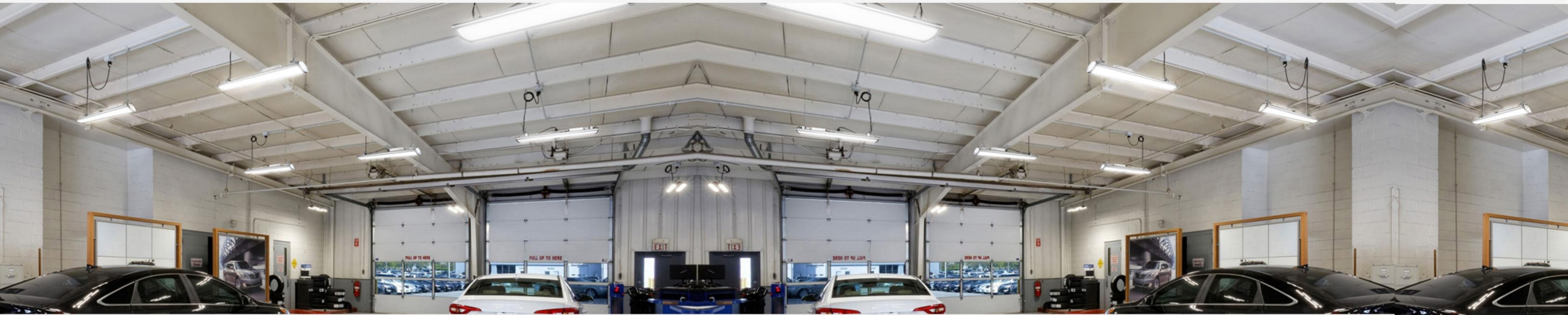
Maxima
Low Bay Light



Model	FR-LB50-E	FR-LB80-E	FR-LB100-E	FR-LB150-E
Wattage	50W	80W	100W	150W
Lumen	7000LM	11200LM	14000LM	21000LM
Size	600*116*60	900*116*60	1200*116*60	1500*116*60
Weight	1.8KGS	2.45KGS	3.2KGS	4.0KGS
Light Source	2835 SMD			
Color temperature	2700-6500K			
Power Factor	0.95			
Input Voltage	AC100-277V			
IP Grade	IP65			
Installation	Mounted/Suspended			
Dimmable	1-10V/Dali optional			
Color rendering	>80			
Beam Angle	30°/60°/90°/120°			
Lifespan	50,000 Hours			
Certification	CE(EMC LVD) ROHS			
Warranty	5 YEARS			

- Light&elegant design
- IP65 Waterproof
- Milky&clear cover
- 1-10V/Dali dimming
- Emergency mode available
- Haning&Mounted installation
- Microwave sensor optional

Maxima Led Low Bay Light is brilliantly designed as a one -for-one replacement to traditional High Bays. With 30/60/90 degree narrow beam angle, it is an ideal solution for warehouse lighting.



Angel

Low Bay Light



UGR<19

Model	FR-LB50-C	FR-LB100-C	FR-LB150-C	FR-LB200-C
Wattage	50W	100W	150W	200W
Lumen	7000LM	14000LM	21000LM	28000LM
Size	600*130*55	1200*130*55	1500*130*55	
Lumen Efficacy	140LM/W±5%			
Light Source	2835 SMD			
Color temperature	2700-6500K			
Power Factor	>0.9			
Input Voltage	AC100-277V			
IP Grade	IP65			
Beam Angle	30°/60°/120°			
Dimmable	1-10V/Dali optional			
Color rendering	>80			
Finish	Aluminum+PC			
Lifespan	50,000 Hours			
Certification	CE(EMC LVD) ROHS			
Warranty	5 YEARS			

- UGR<19 anti-glare lens
- IP65 Waterproof
- Milky&clear cover
- 1-10V/Dali dimming
- Emergency mode available
- Haning&Mounted installation
- Microwave sensor optional

Angel Led Low Bay Light is brilliantly designed as a one-for-one replacement to traditional High Bays. With nice looking, anti-glare lens design, and high brightness, make it be more and more popular in the indoor sports field lighting.



Contact Us

Tel: 86-130-88869086

Web: www.fireflyer.com

Email: info@fireflyer.com

Add: Baoan, SZ, China

* Because Fireflyer is continually improving its products, specifications are subject to change without notice.